



3-Node Retrofit Smart WiFi Switch

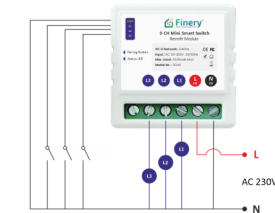
Technical Specifications

Product Type	: 3-Node Smart WiFi Switch
Voltage	: AC 90-250V 50/60Hz
Max. Load	: 5A/Node Max.
Wi-Fi Network	: 2.4Ghz only
Operating Temp.	: -10° to +50°C
Dimensions	: 38 x 38 x 23mm

Installation must be carried out by qualified electrician with basic knowledge of WiFi network

DO NOT attempt to disassemble, repair or modify the device. This will void device warranty.

Wiring Diagram



Connecting App

Scan following QR code to download and install "Smart Life - Smart Living" app from PlayStore or AppStore



Android



iOS

While installing app, make sure to Allow all the permissions asked. Otherwise, smart switch will not connect with app and work properly.

As shown in the Fig.1.0, connect your smartphone with 2.4Ghz Wi-Fi network, Turn on Bluetooth & GPS/Location.

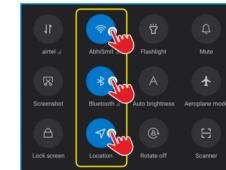


Fig. 1.0



Fig. 1.2

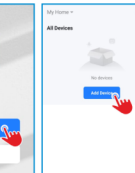
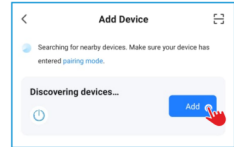


Fig. 1.3

Sign Up if are new user or login to the app if already have account. Click **+** or Click **Add Device** to start searching device.

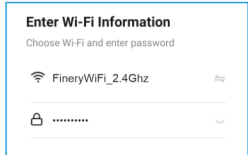


Press and hold the reset button for 5 Seconds to start pairing mode of smart switch with mobile application. Same button is used to RESET the device.



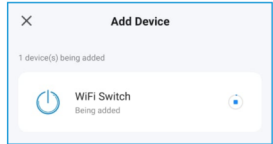
Smart Life app will automatically popup screen to ADD device. Click on **Add** button. It will start pairing app with device and takes 20-180 seconds to complete the setup.
(Pairing time depends on network)

8



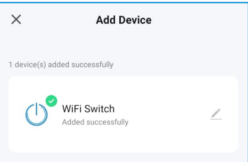
Enter your Wi-Fi password when asked and click **NEXT**. **(Make sure mobile is connected to 2.4Ghz network only)**

9



App will start configuring smart switch with Wi-Fi Network

10



Click **DONE** when device pairing completed successfully. Your smart touch switch will now visible in smart life app. Alexa & Google Home will automatically detect device after pairing.

11

Q1. What should I do if I can't configure the switch module?

- a. Make sure the wiring is correct
- b. Check whether device is powered on
- c. Make sure your mobile & switch module are under the same 2.4Ghz WiFi Network
- d. WiFi is having active internet connection
- e. Make sure the password entered in app is correct

Q2. What happens if the WiFi goes OFF?

You can still control device connected to the smart switch with your traditional switches and once WiFi is active again the device will automatically connect to the WiFi network.

12

Q3. What should I do if I change the WiFi Network or change the password?

You have to reconnect the smart switch to the new WiFi network as per the steps given in this manual.

Q4. How to reset the device?

Power ON/OFF any 1 of traditional switch 8 times until the light flashes or press and hold the Pairing button on smart switch for 5

13



Every WiFi Switch is tested before packing & dispatch. If you face any issue while using WiFi Switch e.g. Not able to connect, Connection with Alexa or Google home kindly contact us on our WhatsApp support number provided below before returning or replacing the product for easy processing. We provide 100% refund/replacement if issue with WiFi switch is not resolved.

WHATSAPP SUPPORT
+91 75592 39386